



Parent's Guide

Peppa Pig Learning Watch



VTech understands that a child's needs and abilities change as they grow and with that in mind we develop our toys to teach and entertain at just the right level...

vtech *Baby*

Toys that will stimulate their interest in different textures, sounds and colours

I am...

...responding to colours, sounds and textures

...understanding cause and effect

...learning to touch, reach, grasp, sit-up, crawl and toddle

Birth-36 months



Pre-School

Interactive toys to develop their imagination and encourage language development

I want...

...to get ready for school by starting to learn the alphabet and counting

...my learning to be as fun, easy and exciting as can be

...to show my creativity with drawing and music so my whole brain develops

3-6 years



Electronic Learning Computers

Cool, aspirational and inspiring computers for curriculum related learning

I need...

...challenging activities that can keep pace with my growing mind

...intelligent technology that adapts to my level of learning

...National Curriculum based content to support what I'm learning at school

4-10 years



To learn more about this and other VTech® products, visit www.vtech.co.uk

INTRODUCTION

Thank you for purchasing the VTech® Peppa Pig Learning Watch.

Play number games and more with the Peppa Pig Learning Watch! Peppa Pig makes learning fun with games that feature counting, comparing, sorting and matching. Keep the learning right at hand!



INCLUDED IN THIS PACKAGE

- One Peppa Pig Learning Watch
- One CR2450 battery (placed inside the product)
- One parent's guide

WARNING:

All packing materials such as tape, plastic sheets, packaging locks, removable tags, cable ties and packaging screws are not part of this toy and should be discarded for your child's safety.

NOTE: Please keep this parent's guide as it contains important information.

PRODUCT SPECIFICATION

BATTERY	One CR2450 battery
TIME FORMAT	12h or 24h
DISPLAY	DIGITAL
OPTIMUM OPERATING AND CHARGING TEMPERATURE	0°C - 40°C

Important Note:

- Do not place the watch under running water.
- Do not submerge. Not suitable for showering, bathing or swimming.
- Keep the cover closed when the watch is not in use.

WARNING:

People with very sensitive skin may notice some irritation after wearing the Peppa Pig Learning Watch for extended periods of time. The skin may become irritated when moisture, sweat, soap or other irritants get trapped under the wristband and are left in contact with the skin. To prevent this, we suggest children remove the watch before going to bed for the night, take the watch off if it's feeling uncomfortable, and keep their wrist and the band clean and dry.

In addition, wearing the watch too tightly may also cause irritation. Make sure the fit is tight enough so the watch stays in place but not so tight that it's uncomfortable. If you notice any redness, swelling, or other irritation, you may want to consult a doctor before wearing the watch again.

GETTING STARTED

⚠ WARNING:

This product contains a button or coin cell battery. A swallowed button or coin cell battery can cause internal chemical burns in as little as two hours and lead to death. Dispose of used batteries immediately. Keep new and used batteries away from children. If you think batteries might have been swallowed or placed inside any part of the body, seek immediate medical attention.

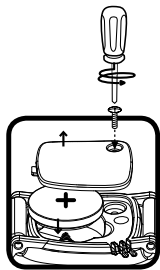
POWER SOURCE

The Peppa Pig Learning Watch operates using a CR2450 battery. The CR2450 battery included with the product is for demo purposes only.

BATTERY INSTALLATION

NOTE: For best performance, remove the factory-installed battery from the Peppa Pig Learning Watch and use a new battery.

1. Locate the battery cover on the back of the unit and open it with a screwdriver (not included).
2. Remove the battery cover and insert a new CR2450 battery as illustrated.
3. Replace the battery cover and fasten the screw.



BATTERY NOTICE

- Use one CR2450 Lithium coin battery only for this toy. Do not use a rechargeable Lithium ion battery LIR2450. This toy is not compatible with LIR2450.
- The coin battery used with this product should be kept away from small children who might still put things in their mouths. If the coin battery is swallowed, consult a doctor immediately.
- Insert the coin battery with the correct polarity.
- Do not use a damaged coin battery.
- Do not short-circuit the coin battery terminals.
- Remove exhausted coin battery from the toy.
- Remove coin battery during long periods of non-use.
- Do not dispose of coin battery in fire.
- Do not charge non-rechargeable coin battery.
- Remove rechargeable batteries from the toy before charging (if removable).
- Rechargeable batteries are only to be charged under adult supervision.

Disposal of batteries and product



The crossed-out wheeie bin symbols on products and batteries, or on their respective packaging, indicates they must not be disposed of in domestic waste as they contain substances that can be damaging to the environment and human health.



The chemical symbols Hg, Cd or Pb, where marked, indicate that the battery contains more than the speied value of mercury (Hg), cadmium (Cd) or lead (Pb) set out in Battery Directive (2006/66/EC).

The solid bar indicates that the product was placed on the market after 13th August, 2005.

Help protect the environment by disposing of your product or batteries responsibly.

For more information, please visit:

www.recycle-more.co.uk

www.recyclenow.com

TO BEGIN USING THE PEPPA PIG LEARNING WATCH

When you use the watch for the first time, open the cover, then press the **Left + Right + OK Buttons** for approximately 5 seconds to unlock the Try-Me mode. You will hear three beeping sounds when the Try-Me mode is unlocked. You can then press any button to activate the watch and set the time.

Press the **Left or Right Buttons** to select, then press the **OK Button** to confirm and move to the next option. A tick icon will be displayed when the setting is complete.

Note:

- When the battery level is low, most functions on the watch may not be activated, except for the clock display. It is recommended to replace with a new battery as soon as possible before further use.
- If the battery level is too low and cannot keep the clock running, you will need to enter the time and date again after the battery has been replaced.

ACTIVITIES & FEATURES

Cover

Open the cover to view the time. When the cover is closed, tap the bottom of the cover to activate Peppa Pig phrases with a fun light effect.

Left/Right Buttons

Use the **Left or Right Buttons** to select an activity or option, adjust the settings or navigate through the games.

Light-Up OK Button

Press the **Light-Up OK Button** to confirm a selection and move to the next option in an activity.

Clock/Home Button

Press the **Clock/Home Button** to return to the clock from any other function or activity.

Clock Display

When the **Clock/Home Button** is pressed, the time will be displayed. Press the **Left** or **Right Buttons** to display the **Home Menu** where other activities and settings can be selected.

Home Menu

Press the **Left** or **Right Buttons** to display the **Home Menu**. There are five options to choose from:

1. Alarm Clock 	2. Stopwatch 	3. Timer 
4. Games 	5. Settings 	

- Press the **Left** or **Right Buttons** to scroll through the menu options.
- Press the **OK Button** to confirm.

Alarm Clock

You can set an alarm with a choice of three alarm tones.

- Press the **Left** or **Right Buttons** to select the time/ alarm tone.
- Press the **OK Button** to confirm and move to the next setting.
- Press the **Clock Button** to automatically save the current setting.



Stopwatch

Access the stopwatch here.

- Press the **OK Button** to start the stopwatch; press again to stop.
- When the stopwatch is stopped, you can press the **Left** or **Right Buttons** to reset.



Timer

Set a countdown timer here.

- Press the **Left** or **Right Buttons** to change the time.
- Press the **OK Button** to confirm.
- When you press the **OK Button** to confirm the timer duration, the countdown will start immediately.
- While the timer is running, you can press the **OK Button** to pause/resume. When it is paused, you can press the **Left** or **Right Buttons** to reset.



Games

In the Games menu, press the **Left** or **Right Buttons** to scroll through the different progressive learning game options:

1. Count With Peppa

Count the number of fish in the tank. Press the **Left** or **Right Buttons** to select the answer, and press the **OK Button** to confirm.



2. Ball & Hoops

Choose the smallest or largest number to shoot the ball into the hoop. Once the ball is under the number hoop you desire, press the **OK Button** to shoot the ball.



3. Fruits or Vegetables

Pick out fruits or vegetables from the conveyor belt. Press the **OK Button** to choose the answer.



4. Matching Shadows

Match the shadow with the correct image of an animal or friend. Press the **Left** or **Right Buttons** to select the answer, then press the **OK Button** to confirm.



Settings

In the Settings menu, press the **Left** or **Right Buttons** to scroll through the various options:

1. Clock Face

- Press the **Left** or **Right Buttons** to select from eight different clock faces.
- Press the **OK Button** to confirm.



2. Cuckoo Clock

- When the Cuckoo Clock is activated, the watch will briefly chime and show the clock at the top of each hour between 7 am and 7 pm. The Cuckoo Clock will not ring if a game is in progress or the Alarm or Timer is ringing.
- Press the **Left** or **Right Buttons** to turn the Cuckoo Clock **On** or **Off**.
- Press the **OK Button** to confirm.



3. Time Setting

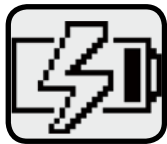
- Press the **Left** or **Right Buttons** to change the options. (Note: The AM/PM setting is only applicable in 12-hour time format.)
- Press the **OK Button** to confirm.



AUTOMATIC POWER OFF

To save power, the Peppa Pig Learning Watch will automatically power off when there has been no input for about 30 seconds. Press any button or open the cover to turn the unit **On** again.

The unit will also automatically turn **Off** when the battery power is very low. If you see the Low Battery icon appear on screen, please replace the battery.



Note: The Peppa Pig Learning Watch will not automatically power off when the Stopwatch is running.

CARE & MAINTENANCE

1. Keep the unit clean by wiping it with a slightly damp cloth. Never use solvents or abrasives.
2. Keep it out of direct sunlight and away from direct sources of heat.
3. Remove the battery when not using it for an extended period of time.
4. Avoid dropping it. Never try to dismantle it.
5. Always keep the unit away from water.

TROUBLESHOOTING

If for some reason the program/activity stops working or the unit cannot be turned on again, please follow these steps:

1. Turn the unit **Off**.
2. Interrupt the power supply by removing the battery.
3. Let the unit stand for a few minutes, then replace the battery.
4. Turn the unit back **On**. The unit will now be ready to play again.
5. If the unit still does not work, replace with a new battery.

CONSUMER SERVICES

Creating and developing VTech® products is accompanied by a responsibility that we at VTech® take very seriously. We make every effort to ensure the accuracy of the information, which forms the value of our products. However, errors sometimes can occur. It is important for you to know that we stand behind our products and encourage you to call our Consumer Services Department with any problems and/or suggestions that you might have. A service representative will be happy to help you.

UK Customers:

Phone: 0330 678 0149 (from UK) or +44 330 678 0149 (outside UK)

Website: www.vtech.co.uk/support

Australian Customers:

Phone: 1800 862 155

Website: support.vtech.com.au

NZ Customers:

Phone: 0800 400 785

Website: support.vtech.com.au

Product Warranty / Consumer Guarantees

UK Customers:

Read our complete warranty policy online at vtech.co.uk/warranty.

Australian Customers:

VTECH ELECTRONICS (AUSTRALIA) PTY LIMITED - CONSUMER GUARANTEES

Under the Australian Consumer Law, a number of consumer guarantees apply to goods and services supplied by VTech Electronics (Australia) Pty Limited. Please refer to vtech.com.au/consumerguarantees for further information.



CLASS 1
LED PRODUCT

**Visit our website for more
information about our products,
downloads, resources and more.**

www.vtech.co.uk
www.vtech.com.au



VTech and the VTech logo TM & © 2020 VTech Holdings Limited.

All rights reserved.

Printed in China.

91-003758-001 (X)