

**vtech**<sup>®</sup>  
Baby

Parent's Guide

## Race-along Bear



91-003771-001 ©

VTech understands that a child's needs and abilities change as they grow and with that in mind we develop our toys to teach and entertain at just the right level...

### **vtech** Baby

Toys that will stimulate their interest in different textures, sounds and colours

#### I am...

...responding to colours, sounds and textures

...understanding cause and effect

...learning to touch, reach, grasp, sit-up, crawl and toddle

Birth-36 months



### **Pre-School**

Interactive toys to develop their imagination and encourage language development

#### I want...

...to get ready for school by starting to learn the alphabet and counting

...my learning to be as fun, easy and exciting as can be

...to show my creativity with drawing and music so my whole brain develops

3-6 years



### **Electronic Learning Computers**

Cool, aspirational and inspiring computers for curriculum related learning

#### I need...

...challenging activities that can keep pace with my growing mind

...intelligent technology that adapts to my level of learning

...National Curriculum based content to support what I'm learning at school

4-10 years

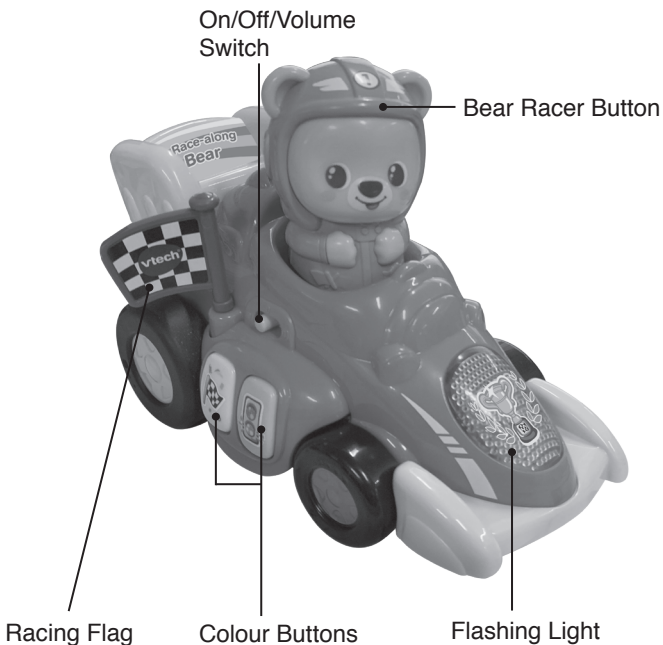


To learn more about this and other VTech® products, visit [www.vtech.co.uk](http://www.vtech.co.uk)

# INTRODUCTION

Thank you for purchasing the **Race-along Bear!**

This little bear loves to race! Press the bear or pull back on the race car and release it to send the car zooming, encouraging toddlers to chase after it. Songs, phrases and melodies teach colours, numbers and vocabulary with flashing lights and buttons to press. On your mark, get set, play!



## INCLUDED IN THIS PACKAGE

- One Race-along Bear
- One parent's guide

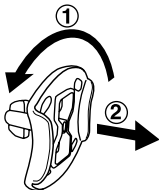
### WARNING:

All packing materials, such as tape, plastic sheets, packaging locks, removable tags, cable ties, cords and packaging screws are not part of this toy and should be discarded for your child's safety.

### NOTE:

Please keep this parent's guide as it contains important information.

### Unlock the packaging locks:



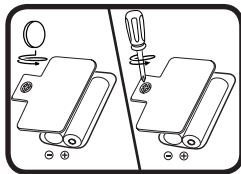
① Rotate the packaging locks anticlockwise 90 degrees.

② Pull out the packaging locks and discard.

## GETTING STARTED

### Battery Removal and Installation

1. Make sure the unit is turned **Off**.
2. Locate the battery cover on the bottom of the race car. Use a coin or screwdriver to loosen the screw and open the battery cover.
3. Remove old batteries by pulling up on one side of each battery.
4. Install 2 new AAA (AM-4/LR03) batteries following the diagram inside the battery box. (The use of new alkaline batteries is recommended for maximum performance).
5. Replace the battery cover and tighten the screw to secure.



## BATTERY NOTICE

- Use new alkaline batteries or fully charged NI-MH (Nickel Metal-hydride) rechargeable batteries for best performance.
- Use only batteries of the same or equivalent type as recommended.
- Do not mix different types of batteries: alkaline, standard (carbon-zinc) or rechargeable, or new and used batteries.
- Do not use damaged batteries.
- Insert batteries with the correct polarity.
- Do not short-circuit the battery terminals.
- Remove exhausted batteries from the toy.
- Remove batteries during long periods of non-use.
- Do not dispose of batteries in fire.
- Do not charge non-rechargeable batteries.
- Remove rechargeable batteries from the toy before charging (if removable).
- Rechargeable batteries are only to be charged under adult supervision.

## Disposal of batteries and product



The crossed-out wheellie bin symbols on products and batteries, or on their respective packaging, indicates they must not be disposed of in domestic waste as they contain substances that can be damaging to the environment and human health.



The chemical symbols Hg, Cd or Pb, where marked, indicate that the battery contains more than the specified value of mercury (Hg), cadmium (Cd) or lead (Pb) set out in Battery Directive (2006/66/EC).

The solid bar indicates that the product was placed on the market after 13th August, 2005.

Help protect the environment by disposing of your product or batteries responsibly.

For more information, please visit:

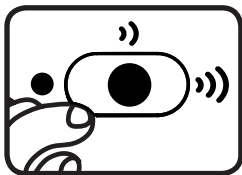
[www.recycle-more.co.uk](http://www.recycle-more.co.uk)

[www.recyclenow.com](http://www.recyclenow.com)

## PRODUCT FEATURES

### 1. On/Off/Volume Switch

To turn the unit **On**, slide the **On/Off/Volume Switch** to the **Low** )) or **High** ))) volume position. You will hear a sound, phrase and a song. To turn the unit **Off**, slide the **On/Off Volume Switch** to the **Off** ● position.



### 2. Automatic Shut Off

To preserve battery life, the **Race-along Bear** will automatically power down after approximately 30 seconds without input. The unit can be turned on again by pressing any button.

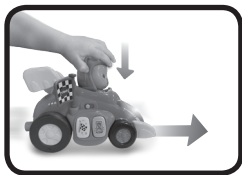
#### Note:

If the unit repeatedly powers down while playing, or the light fades out, we suggest changing the batteries.

## ACTIVITIES

### 1. Bear Racer Button

Press the **Bear Racer Button** to propel the car forward. You will hear a song, exciting phrases, sounds and music. The light will flash with the sounds.



#### Note:

For your child's safety, do not press and release the race car on clothing, skin or hair. Adult supervision is recommended.

## 2. Pull Back and Release

Pull the car back and release it to launch the car forward and watch it zoom across the floor.

### Note:

The car moves best on smooth, flat surfaces.



## 3. Colour Buttons

Press the **Colour Buttons** on the side of the car to learn about colours, racing phrases, sounds and music. The light will flash with the sounds.



## 4. Racing Flag

Turn the **Racing Flag** to hear it click.



# MELODY LIST

1. Bear Went Over the Mountain
2. Here We Go 'Round the Mulberry Bush
3. Humpty Dumpty
4. Skip to My Lou
5. Oh! Susanna
6. Pop! Goes the Weasel
7. Looby Loo
8. Hey Diddle Diddle



9. Blow the Man Down
10. William Tell Overture (by Rossini)
11. Big Rock Candy Mountain
12. Camptown Races
13. Aiken Drum
14. Glow Worm
15. Froggy Went a Courtin'

## SING-ALONG SONG LYRICS

### Song 1

Vroom, Vroom! Look at me!  
Driving makes me so happy!  
Pull me back, and let me go,  
Racing is the life for me.

### Song 2

1-2-3! I'm in first place,  
Driving fast, I know I'm going to win the race.

### Song 3

I'm a little speed racer.  
I like to feel the wind in my fur,  
Zooming down the road in my speedy car.

## CARE & MAINTENANCE

1. Keep the unit clean by wiping it with a slightly damp cloth.
2. Keep the unit out of direct sunlight and away from any direct heat sources.
3. Remove the batteries if the unit will not be in use for an extended period of time.
4. Do not drop the unit on hard surfaces and do not expose the unit to moisture or water.







## TROUBLESHOOTING

If for some reason the program/activity stops working, please follow these steps:

1. Turn the unit **OFF**.
2. Interrupt the power supply by removing the batteries.
3. Let the unit stand for a few minutes, then replace the batteries.
4. Turn the unit back **ON**. The unit will now be ready to play with again.
5. If the unit still does not work, install a brand new set of batteries.

If the problem persists, please contact our Consumer Services Department and a service representative will be happy to help you.



CLASS 1  
LED PRODUCT



## CONSUMER SERVICES

Creating and developing VTech® products is accompanied by a responsibility that we at VTech® take very seriously. We make every effort to ensure the accuracy of the information, which forms the value of our products. However, errors sometimes can occur. It is important for you to know that we stand behind our products and encourage you to call our Consumer Services Department with any problems and/or suggestions that you might have. A service representative will be happy to help you.

### **UK Customers:**

Phone: 0330 678 0149 (from UK) or +44 330 678 0149 (outside UK)

Website: [www.vtech.co.uk/support](http://www.vtech.co.uk/support)

### **Australian Customers:**

Phone: 1800 862 155

Website: [support.vtech.com.au](http://support.vtech.com.au)

### **NZ Customers:**

Phone: 0800 400 785

Website: [support.vtech.com.au](http://support.vtech.com.au)



## PRODUCT WARRANTY/ CONSUMER GUARANTEES

### **UK Customers:**

Read our complete warranty policy online at [vtech.co.uk/warranty](http://vtech.co.uk/warranty).

### **Australian Customers:**

VTECH ELECTRONICS (AUSTRALIA) PTY LIMITED – CONSUMER GUARANTEES

Under the Australian Consumer Law, a number of consumer guarantees apply to goods and services supplied by VTech Electronics (Australia) Pty Limited. Please refer to [vtech.com.au/consumerguarantees](http://vtech.com.au/consumerguarantees) for further information.



**Visit our website for more  
information about our products,  
downloads, resources and more.**

***www.vtech.co.uk***  
***www.vtech.com.au***



TM & © 2019 VTech Holdings Limited.  
All rights reserved.  
**Printed in China.**  
91-003771-001 